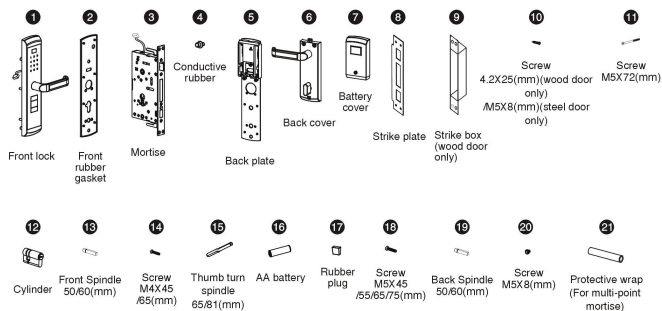
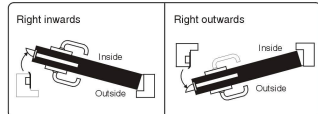


1. Accessory

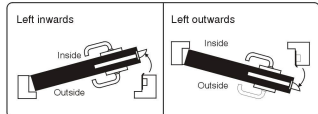


2. Door opening direction

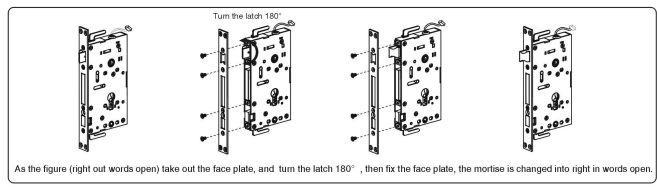
① Right handle opening



② Left handle opening



3. Cover the mortise from outside open to inside open



4. Accessories for sorts of door thickness

Available door thickness 42mm-80mm. If the door is over this range, please contact us for more information. Please select the correct accessories according to your door thickness

Code and name	Specifications(mm)	QTY	door thickness ranges			
			40-50(mm)	50-60(mm)	60-70(mm)	71-80(mm)
13 Front Spindle 50/60(mm)		1	✓	✓		
		1			✓	✓
19 Back Spindle 50/60(mm)		1	✓	✓		
		1			✓	✓
15 Thumb turn spindle 65/81(mm)		1	✓			
		1		✓	✓	✓
10 Screw 4.2X25(mm) (wood door only)		8	✓	✓	✓	✓
		8	✓	✓	✓	✓
12 Screw M4X45 /65(mm)		4	✓	✓		✓
		4	✓			✓
18 Screw M5X45 /55/65/75(mm)		3		✓		
		3			✓	
		3				✓
12 Cylinder		1	✓	✓	✓	
		1				✓
21 Protective wrap (For multi-point mortise)		1				
		1	40	50	60	70
		1	40	50	60	70
		1	40	50	60	70

5. Caution before installation

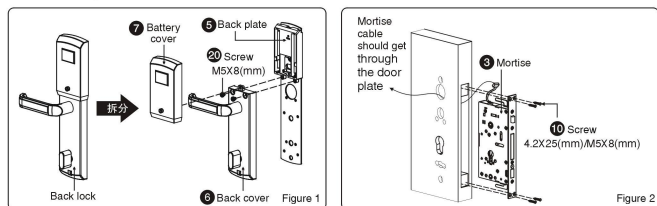
- Do not be a strong force when installation, avoid to damaging the lock.
- Use correct installation tools
- Wear glass to protect your eyes when drilling holes
- Drilling the door holes on both side of the door avoiding to damaging the door plate.



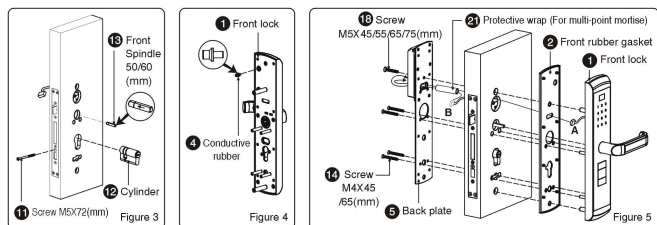
6. Installation

Note: The appearance of lock in the picture may a little different from the real model, but same installation guide. The unmarked size tolerance of door drilling according to GB/T12471-1990-level 2.

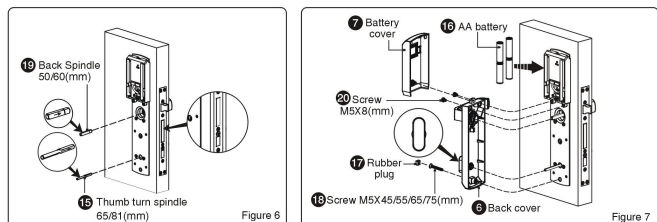
Installation steps:



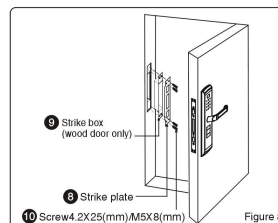
- (1) As Figure 1:
 ① Divide back lock into battery cover, back cover, back plate and screw M5X8.
- (2) As Figure 2:
 ① Make the mortise cable get through the door plate, fix the mortise with 4 screws.



- (3) As Figure 3:
 ① Fix the cylinder with screw M5X72.
 ② Insert the spindle according to the remark
- (4) As Figure 4:
 ① Put the conductive rubber into the corresponding of hole on the front lock.
- (5) As Figure 5:
 ① Make cable A through front rubber gasket, door plate and back plate, then make cable B through back plate, put away the cables. After that please fix back plate with 5 screws.
 ② Connect cable A with 3 pins socket, and connect cable B with 6 pins socket on back plate.



- (6) As Figure 6:
 ① Insert the back spindle and thumb turn spindle according to the remark.
 (Note: Make sure all of the latches are retracted before installation.)
- (7) As Figure 7:
 ① Connect back cover with back plate with three screws.
 ② Put the batteries correctly, and fix the battery cover and install the rubber plug.



- (8) As Figure 8:
 ① Install the strike box and strike plate on the door frame with 4 screws.
 (Note: this no strike box for steel door frame)
 ② Test the lock if it works correctly.

7. Check points after installation

- Down the handles to test if it works properly.
- After key registration, check the lock open.
- The door should be automatically locks in 4 seconds.
- Test the mechanical override, check the lock open.