

## ★ Drill Door Holes S2XX(M)-65, AN1

Use a drill bit to make holes for lock in specified location as figure 1 for Right handed door. (Note: the shadow area need to be drilled at the back and drilled to 25mm/0.984" deep.) Template for left handed door as well.

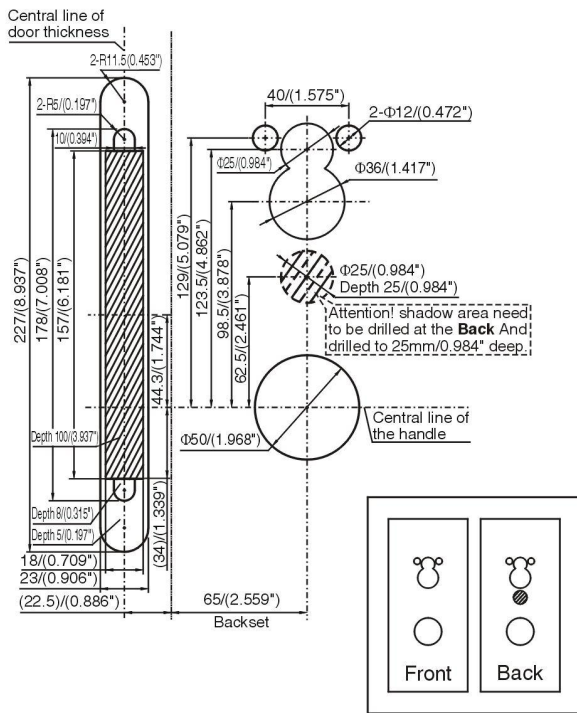


Figure 1

## ★ Strike box installation hole diagram

Use a drill bit to make a hole for strike box in specified location as figure 2. The height of the hole base on centerline of handle. The position of strike box should be adjusted in order to make the lock keeps smooth with doorframe when the door is closing.

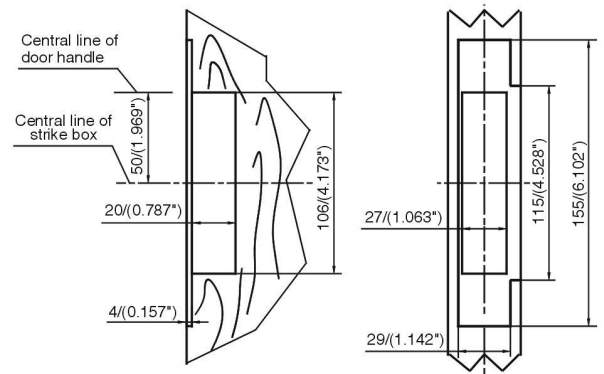


Figure 2

Put strike box into the hole and fix it with strike plate on doorframe by using 2 tapping screws as figure 3.

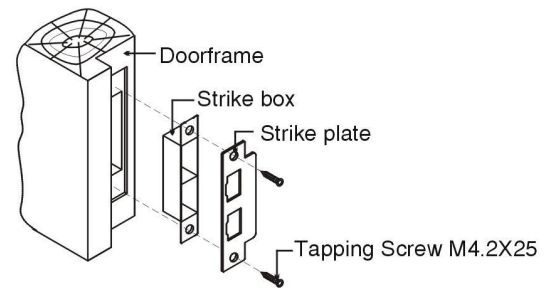


Figure 3

A

## ★ Installation Guide S2XX(M)-65, AN1

Install the door lock by following the below procedure:

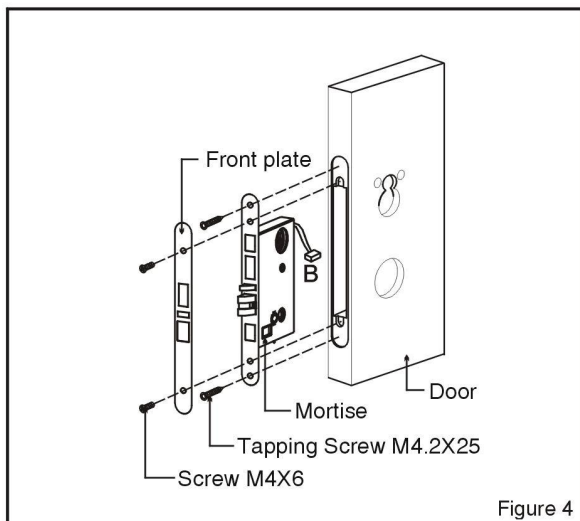


Figure 4

### Install the door lock by following steps:

(1). As figure 4 shown, pull out mortise wire B to inside and fix the mortise by 2 pieces of tapping screw M4.2X25. Cover the Front plate on it and fasten it by 2 pieces of screw M4X6.

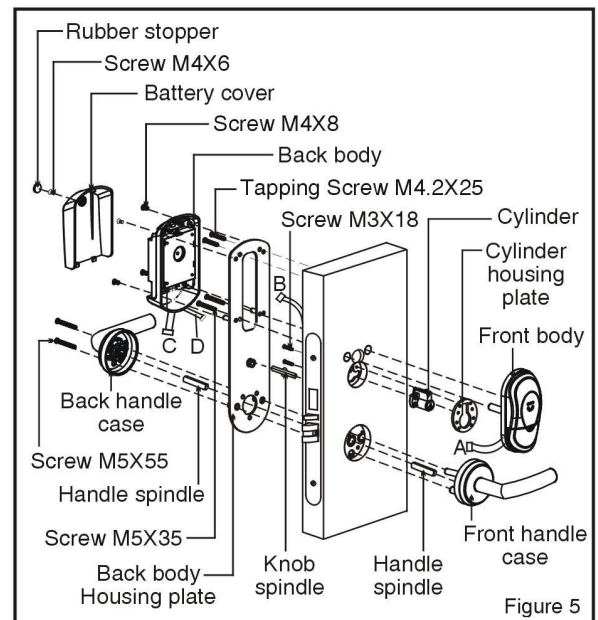


Figure 5

(2). ① Install the cylinder with cylinder housing plate on mortise by using the 2 piece screws M3X18. ② Fix the Back body Housing plate with knob spindle on door by using 2 piece tapping screws(M4.2X25). ③ Fix the Front Handle case and Back Handle case with handle spindle by using 2 pieces screws(M5X55). ④ Pull the Front body wire A through Back body Housing plate, and fix the Front body on door by using 2 piece screws(M5X35). ⑤ Connect the Front body wire A with Back body wire C and mortise wire B with Back body wire D. ⑥ Fix the Back body on door by using 4 piece screws(M4X8), then Install 4 piece AA Batteries and the battery cover, finally fix the battery cover with 1 piece screw(M4X6) and Rubber stopper.

A