

BASE RFID 'LEVER'



Be-Tech BASE 'LEVER' RFID is a stylish cylindrical latch solution. It combines modern design and expert engineering to present a multifaceted security option that fits seamlessly into any back-of-house security blueprint providing upgraded life safety and property security. It seamlessly integrates with existing Be-Tech installations.

Be-Tech BASE 'LEVER' RFID is ideal for upgrading existing mechanical locking systems or for improving back-of-house controls.

Be-Tech BASE 'LEVER' RFID based on the same product platform as Be-Tech RFID locking system. Thus it is compatible with BIS HOTEL software platform.

RFID Specifications

- 13,56MHz technology
- Compatible with the following standard:
ISO 14.443 A (MIFARE)
- Eleven free sectors for future All-in-one card application use.

BASE 'LEVER' RFID BY BE-TECH BENEFITS:

- **More Guest Satisfaction:** Worldwide famous Mifare contactless technology for all guest and staff cards. No need to insert keycard, more easier to access guest room.
- **More Security:** Anti-hacker technology for locks. Unlike other competitor's keycards can be hacked into lock memory through mini USB port on outside escutcheon, crack and open the keycards. Be-Tech anti-hacker technology not allows re-program FLASH RAM lock memory from outside escutcheon.
- **More Adaptability:** RFID keycards and carriers can be use for any style hotels, you can choose from low cost guest card, wristbands and keyfobs to perfectly match different hotel type: Business, Resort, Spa, All-Inclusive.
- **More Information and Control:** BASE 'LEVER' RFID electronic lock can check information by Be-Tech provided Data Cards for better information and management: Entry record audit trail, low battery status, real-time clock adjustment, etc...
- **More Integration:** You can integrate and interface BASE 'LEVER' RFID keycards with other applications at your hotel.
- **More Exclusivity:** Provide a new experience for your customers and enhance the image of your hotel.
- **More Flexibility:** BASE 'LEVER' RFID electronic lock is designed for facilities renovation use, you can have electronic hotel locking systems without any carpentry.
- **More Productiveness:** Provides Tour Group Reservation and Tour Group Check-in, enhance the check-in efficiency of your hotel.
- **...and Less Expense:** BASE 'LEVER' RFID by Be-Tech is selling at a very competitive price by Be-Tech global distributors.

FEATURES:

- Stand alone electronic lock with RFID technology. Easily
- replaces existing mechanical lever-set or knob-set without any carpentry.
- 60/70mm backset adjustable tubular latch.
- ANSI/BHMA Grade 3 approved tubular latch.
- Operates with a completely sealed contactless module.
- Brushed stainless steel finish with higher anti-corrosion performance.
- Inside escutcheon is fitted with concealed battery holder making staff easy replace battery.
- Handle free rotate design ensures that the security of guestroom, and prevent violent opening via handle on outside escutcheon.
- ADA compliant (guest with physical disabilities)
- Future proof re-programmable FLASH RAM lock memory.
- Powered by 4AA batteries that provide up to 1 year normal life time.
- 400 event audit trail.
- Compatible with BIS HOTEL software platform.

A wide range of RFID (contactless) carriers

Be-Tech offers a wide range of RFID carriers which are designed for different applications (for your guests, for your staff or for your VIP guests) and gives you the opportunity to enhance your guests' experience at your hotel.

Typical hotel application:

Guests: Reusable low cost guest keycards.
Staff: Special printing long lasting staff keycards.
VIP guests: Keyfobs.

Typical resort & spa application:

Guests: Wristband for guest convenience and all-inclusive.
Staff: Special printing long lasting staff keycards.
VIP guests: Wristbands or keyfobs.



Reusable low cost guest keycards:
Cards may be customized at your request.



Special printing long lasting staff keycards:
Cards may be customized at your request.



Keyfobs:
Tags may be hang with a keychain, and can be customized at your request.

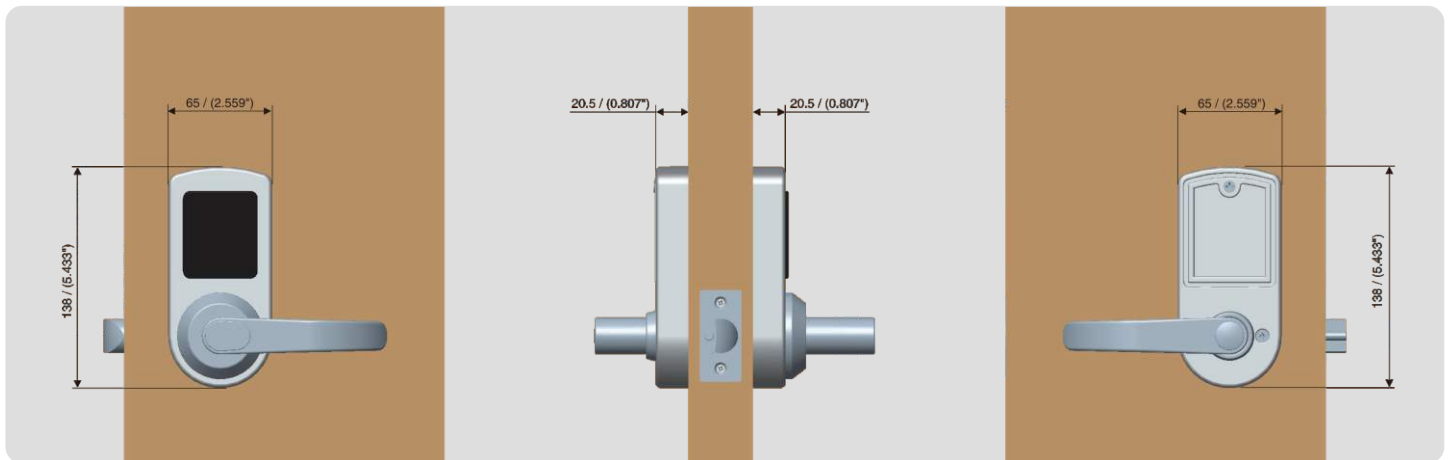


Wristbands:
The wristbands can be used for 'all-inclusive' resorts and spas.





Dimensions:



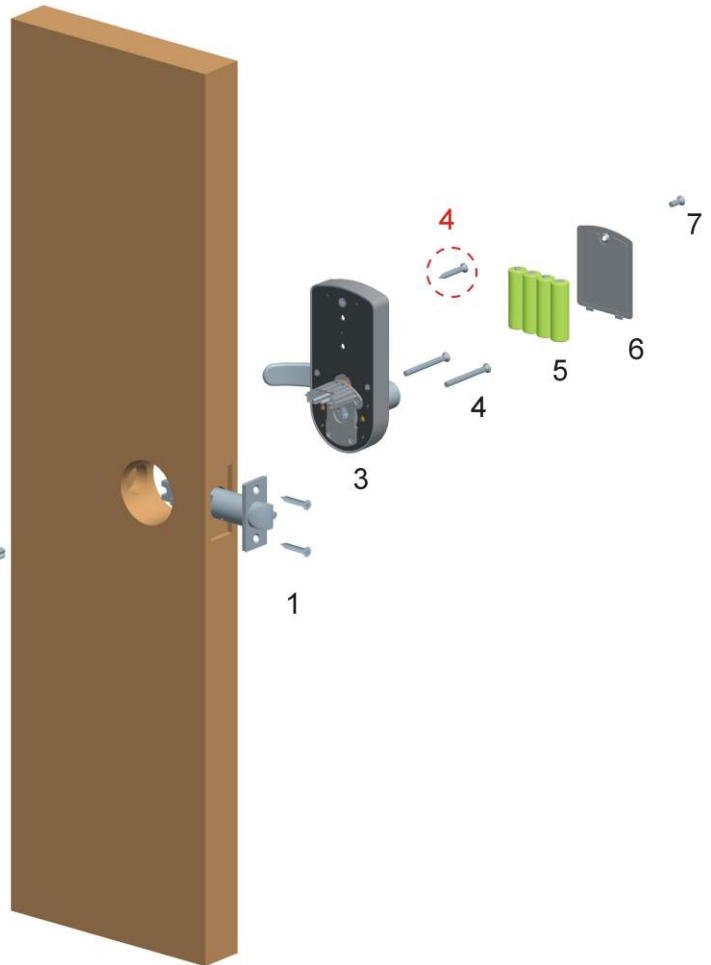
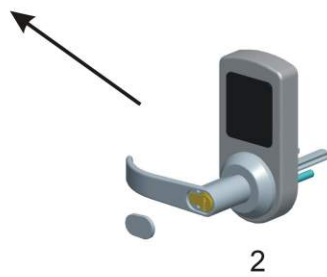
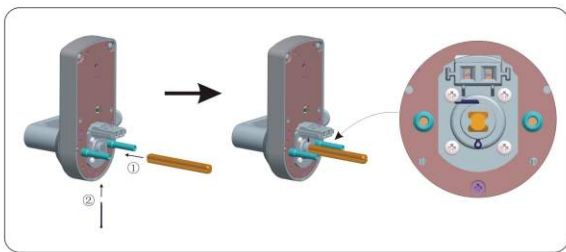
Emergency Cylinder

Be-Tech locks will also be supplied with mechanical override cylinder, enhance your hotel security level.

- Superior pick resistance 4 dual pin bump proof high security cylinder.
- Mechanical cylinder will not visible with a cylinder cover.
- Cylinder is available for achieve mechanical key alike (KA) or mechanical key different (KD).



SPECIFICATIONS



Target Doors:

Thickness: 35mm - 50mm (1.38" - 1.97")

Backset: 60mm or 70mm (2.36" or 2.76")

Wood or metal, hollow or solid

Contact us:

Smart Your Life



Guangdong Be-Tech Security Systems Limited

No.17, KeYuan 3 Road, Ronggui

Shunde High-Tech Zone, Foshan,

Guangdong 528306, P.R.China

Tel: +86 757 28376123 | Fax: +86 757 28308823

E-mail: export@be-tech.com.cn | www.betech-security.com

ID: 04-BTHA44C1409-E1-02

Specifications may change without notice.